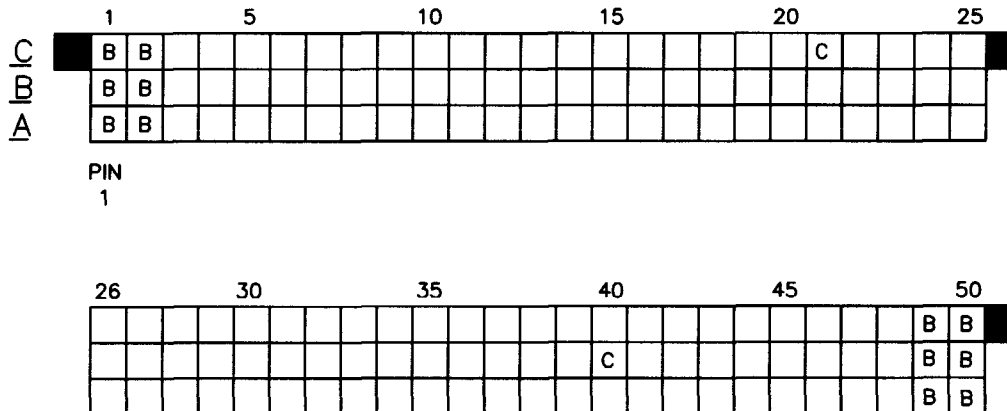
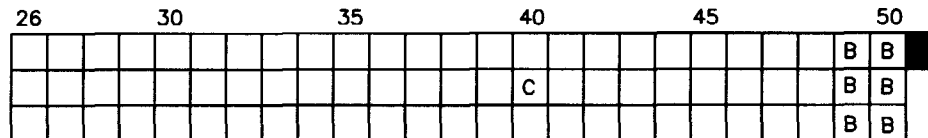


ITEM KEY	SIGNAL DATA			
	SIZE 3 x 50	TOTAL NO. OF POSITIONS -150	NO. OF POSITIONS LOADED - 150	
	PLATING - 30u"/.76u GXT	PRESS FIT STYLE		
	PIN P/N	QTY.	MATING LENGTH	TAIL LENGTH
A	94081-5035B	136	.200 / 5.08	.177 / 4.50
B	94081-5037B	12	.200 / 5.08	.533 / 13.54
C	94081-5092B	2	.240 / 6.10	.177 / 4.50

HSG P/N: 50789-X150X



PIN
1



Tous droits strictement reserves. Reproduction ou communication o des tiers interdite sous quelque forme que ce soit sans autorisation écrite du propriétaire. Property of FCI. Droits de reproduction FCI.

All rights strictly reserved. Reproduction or issue to third parties in any form whatever is not permitted without written authority from the proprietor. Property of FCI. Copyright FCI.



1. ALL POSITIONS ARE LOADED WITH "A" EXCEPT AS SHOWN.
2. COLUMN 1, ROW A IS DESIGNATED AS SIGNAL PIN 1, AS VIEWED FROM THE MATING FACE.
3. FOR ADDED DIMENSIONAL INFORMATION REFER TO DOCUMENT NUMBER "50006".

mat'l. code		tolerances unless otherwise specified		CUSTOMER COPY		Electronics www.fciconnect.com	
ltr	ecn no	dr	date		.XX ±.01 / xx±0.3	projection	
A	V31885	DHS	10/28/93	linear	.XXX ±.005 / .xx±.13		
B	C60070	DHS	7/11/96		.xxxx ±.0020 / .xxx±.051	title	
C	V82252	HTB	10/28/98	angles	0° ±2'	3 ROW VERTICAL HEADER	
D	V00779	LSS	5/4/00	dr	D.SHIELDS 10/28/93	PRESS FIT, SELECT LOAD, O G.P.	
				enrg	S.CLARK 10/28/93	product family HPC	
				chr	S.CLARK 10/28/93	code	
				appd	S.CLARK 10/28/93	size	
sheet	revision	D				scale	
index	sheet	1				A 50006-XX010	
						code	
						22526	
						sheet	
						1 of 1	